



GLOVE™ AIRFLOW™ (GAIR)
PART OF THE IN-CHAIR DIVIDED LEG SLING FAMILY

The GLOVE™ Airflow™ sling is at the forefront of technological advancement for in-situ sling use.

The fabric was initially designed for military and police garments to help regulate body temperature during extreme-pressure situations so it is perfect for sling users who need to remain in-situ for longer periods of time than normal.

FEATURES & BENEFITS

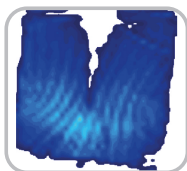
- Soft 3D-Airflow Polyester fabric provides stretch with incredible strength
- Advanced breathable fabric
 - helps reduce overheating
 - minimises tissue viability risk
- Unique shape provides full body support
- Strap pockets to eliminate snagging risk



AIRFLOW™ fabric



Comfortable temperate seating experience



Pressure Mapping evidence available



GAIR



GAIR

IN-CHAIR

SLING SHAPE	In-Chair
PRIMARY USE	
TRANSFER	
SIZE	2-12
SWL (KG)	2-9: 230 10-12: 350
ATTACHMENT TYPE	Extensor strap
CLIP OPTION	✓
MODESTY COVER	Loop
PICK UP	Outside leg
POSITIONING AID	✗
HEAD SUPPORT	✓
APERTURE	✗
AMPUTEE	✓
MATERIALS	3D-Airflow Polyester
PADDING	Integral to fabric
STANDARD COLOUR	
ACCESSORIES	✓
CUSTOMISABLE	✓
WARRANTY	Lifetime
COMPATIBILITY	Majority of hoists
OTHER INFO	Strap pockets A 3-Loop shoulder strap version is also available (GAIR/B)



Call 033 012 80808
to book a free assessment